

DOWNLIGHT SERIES



A7

No.	Power	Beam angle	CRI	Spec mm	Cut-out mm
A7-20	5 W			Ø70xH40	Ø60
A7-25	7 W			Ø90xH45	Ø75
A7-30	12 W	15°/24°/36°	≥85	Ø110xH48	Ø90
A7-40	18 W			Ø140xH55	Ø120
A7-50	24 W			Ø165xH58	Ø145



A6-S

No.	Power	Beam angle	CRI	Spec mm	Cut-out mm
A6-S412	12 W	120°	≥85	150x150xH45	130x130
A6-S618	18 W			175x175xH45	155x155



A6-R

No.	Power	Beam angle	CRI	Spec mm	Cut-out mm
A6-R412	12 W	120°	≥85	Ø150xH45	Ø130
A6-R618	18 W			Ø175xH45	Ø150



C21T
18W



LA11
12W



LA37
24W



LA13
12W



LA09
7W



AR111
11101

SPOTLIGHT SERIES



A2

No.	Power	Beam angle	CRI	Spec mm	Cut-out mm
A2-25	5 W			Ø90xH23	Ø70
A2-35	9 W	24°	≥85	Ø110xH25	Ø90
A2-40	15 W			Ø140xH30	Ø113
A2-60	18 W			Ø160xH32	Ø130



SA9

No.	Power	Beam angle	CRI	Spec mm	Cut-out mm
SA925	7 W			Ø85xH62	Ø75
SA930	12 W	15°/24°	≥85	Ø110xH60	Ø90
SA940	18 W			Ø122xH58	Ø110
SA950	24 W			Ø153xH82	Ø130



SA6

No.	Power	Beam angle	CRI	Spec mm	Cut-out mm
SA625	7 W			Ø85xH46	Ø75
SA630	12 W	15°/24°	≥85	Ø110xH68	Ø90
SA640	18 W			Ø139xH73	Ø120
SA650	24 W			Ø160xH85	Ø140



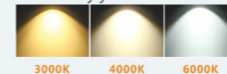
XB04

No.	Power	Beam angle	CRI	Spec mm	Cut-out mm
XB0425	7 W			Ø85xH65	Ø75
XB0435	12 W	24°	≥85	Ø110xH90	Ø98
XB0440	18 W			Ø130xH95	Ø120
XB0450	28 W			Ø155xH110	Ø145
XB0460	35 W			Ø190xH150	Ø175

PAR30 SERIES



3000K/4000K/6000K
Choose by your environment



P316B
18W



P317
24W



P336
24W



P305
40W



P359TJB

System Power : 28W

Beam angle : Change beam angle

Lumen : 80 Lm/W

Size : Ø95*H140

CRI : ≥80

Color : BK/WH

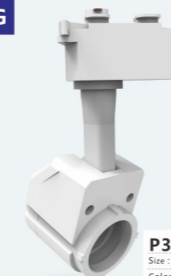
PAR20 SERIES AND PAR30 HOUSING



P203TJ
10W



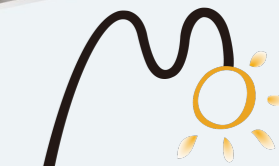
P202
10W



P3022
Size : Ø45*80*H120
Color : BK/WH



P3025
Size : Ø100*145*H245
Color : BK/WH



Foshan MO-Lighting Co., Ltd

Tel: 0086-757-81802499
Mobile/Whatsapp: 0086-13925474440
Email: rainbow@mo-lighting.com
Web: https://www.mo-lighting.com/

DD10

LED TRACK LIGHT

System Power : 7 W

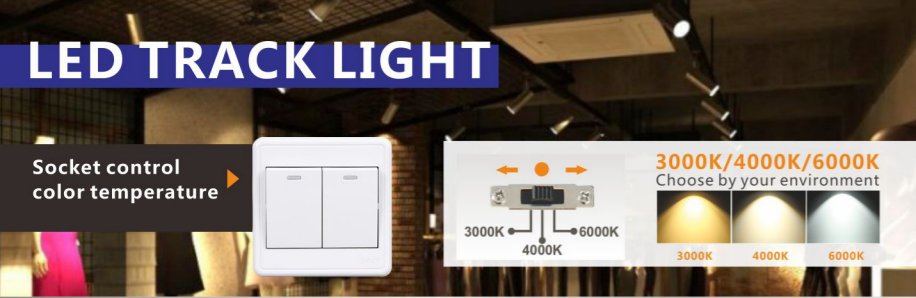
Beam angle : 15°/24°/36°

Lumen : 85 Lm/W

Size : Ø45*80*H120

CRI : ≥85

Color : BK / WH



DD31

System Power : 28 W
 Beam angle : 15°/24°/36°
 Lumen : 80 Lm/W
 Size : Ø77*165*H230
 CRI : ≥80
 Color : BK / WH



DD17

System Power : 28 W
 Beam angle : 15°/24°
 Lumen : 80 Lm/W
 Size : Ø100*134*H200
 CRI : ≥80
 Color : BK / WH / BK+WH



DD61

System Power : 28 W
 Beam angle : 15°/24°/36°
 Lumen : 80 Lm/W
 Size : Ø70*145*H210
 CRI : ≥80
 Color : BK / WH



DD70

No.	Power	Beam angle	CRI	Lm/w	Spec mm
DD70-12W	12 W				Ø50x100xH170
DD70-18W	18 W	15°/24°/36°	≥85	80	Ø65x132xH200
DD70-30W	30 W				Ø77x143xH215
DD70-32W	32 W				Ø77x143xH215



DD11/DD21/DD31

No.	Power	Beam angle	CRI	Lm/w	Spec mm
DD11	12 W				Ø60x130xH190
DD21	18 W	15°/24°/36°	≥85	80	Ø70x155xH215
DD31	30 W				Ø78x165xH230



D59

No.	Power	Beam angle	CRI	Lm/w	Spec mm
D59-12W	12 W				Ø50x100xH170
D59-18W	18 W	15°/24°/36°	≥85	80	Ø60x135xH205
D59-30W	30 W				Ø80x150xH215
D59-32W	32 W				Ø80x150xH215



D51/D52/D53

No.	Power	Beam angle	CRI	Lm/w	Spec mm
D51-12W	12 W				Ø66x120xH150
D52-18W	18 W	24°	≥85	80	Ø80x120xH175
D53-30W	30 W				Ø80x135xH175



DD91

System Power : 27 W
 Beam angle : 15°/24°/36°
 Lumen : 80 Lm/W
 Size : Ø85*119*H210
 CRI : ≥85
 Color : BK / WH



DD16

System Power : 24 W / 35 W
 Beam angle : 24°
 Lumen : 80 Lm/W
 Size : Ø65*70*H168
 CRI : ≥85
 Color : BK / WH



DD13/DD03/DD23

No.	Power	Beam angle	CRI	Lm/w	Spec mm
DD13	12 W				Ø70x138xH240
DD03	18 W	15°/24°/36°	≥85	80	Ø90x165xH270
DD23	26W/30W				Ø100x186xH310



DD41/DD42/DD43

No.	Power	Beam angle	CRI	Lm/w	Spec mm
DD41	12 W				Ø60x115xH190
DD42	18 W	15°/24°/36°	≥85	80	Ø70x135xH215
DD43	30 W				Ø77x150xH230



DM50 12W



DM40 10W



DF170 35W



DF470 40W



DM99T 30W



DD18 40W



D39 30W



DD25 30W